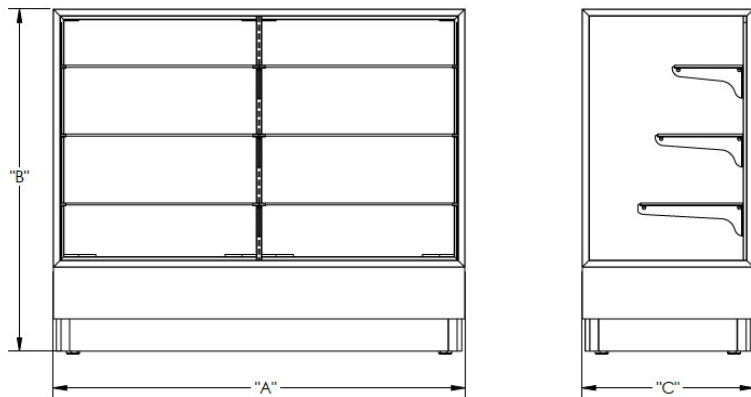


Merchandise Floor Case Collection (2010)



	"A"	"B"	"C"
2010-4-XX-XX	48"	40"	20"
2010-5-XX-XX	60"	40"	20"
2010-6-XX-XX	72"	40"	20"

Shelving:

- 3 Full Length Staggered Shelves for Displaying

	Shelf 1	Shelf 2	Shelf 3
2010-4	¼" Thick x 8" D x 47" L	¼" Thick x 10" D x 47" L	¼" Thick x 12" D x 47" L
2010-5	¼" Thick x 8" D x 59" L	¼" Thick x 10" D x 59" L	¼" Thick x 12" D x 59" L
2010-6	¼" Thick x 8" D x 71" L	¼" Thick x 10" D x 71" L	¼" Thick x 12" D x 71" L

- The case utilizes a standard for shelf adjustments in 1" increments.
- Each shelf has a capacity of 25 lbs.

Doors:

- Back pebbled sliding doors that open from both sides for easy access. Door handles match the base.
- Lock mechanism is the Selby-033 cam lock that comes with 2 keys.

Lighting:

- No lighting in the standard models.

Materials:

- Case frame is made of anodized aluminum in a variety of colors.
- Base comes in a variety of laminate colors with a kickplate.

Assembly/Weight/Shipping:

- Cases arrive semi-assembled. Installers will need to unpack/untape the unit, install the shelves, install the door handles, and level the case. Tip protection is also provided and must be installed to meet furniture tip over requirements.
- Cases vary from 230 to 300 lbs.
- Cases will arrive on a pallet shrink-wrapped and packaged for safe arrival.

