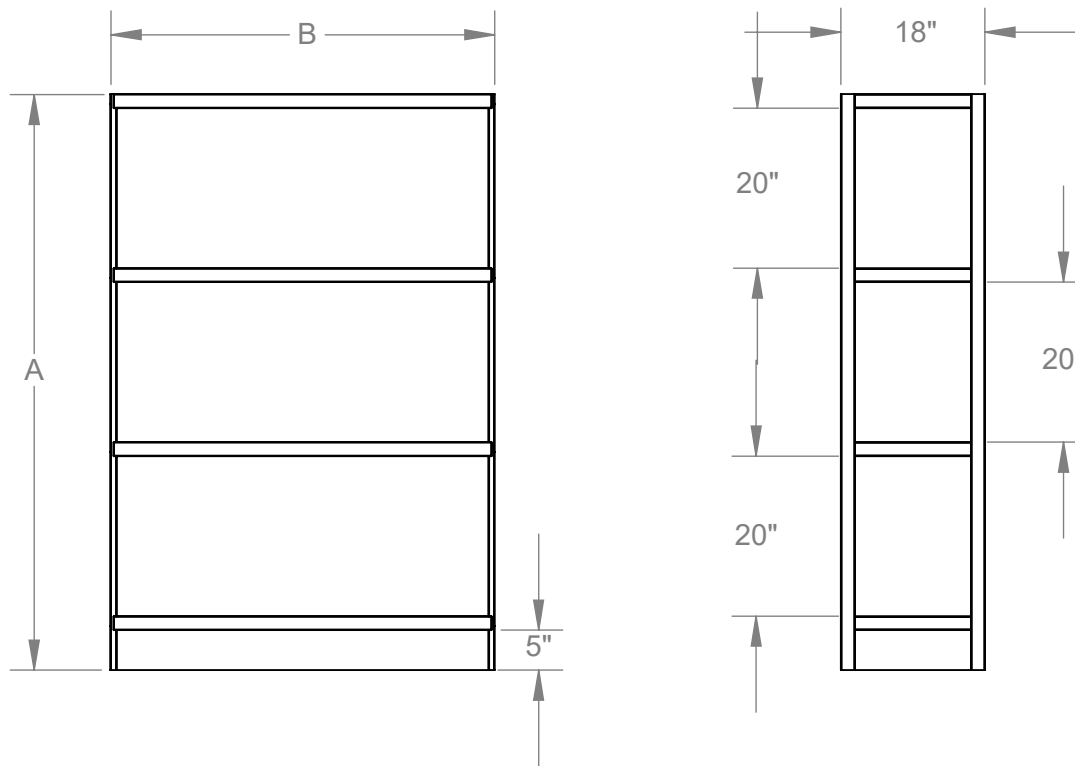


Control Space Division / CTRL

Product Specifications



Materials:

- Frame: 7/8" Red oak
- Shelves: 1/2" Laminated plywood and 1/2" veneer plywood

Features:

- Available in 4 sizes
- Available in 4 frame colors: Natural, Urban Walnut, Java, and Modern Cherry
- Available in 3 laminate colors: White, Black, and Gray. Available in 4 veneer stain colors: Natural, Urban Walnut, Java, and Modern Cherry
- Includes adjustable levelers
- Can be used with panel kits and angled shelf kits
- Unit carries a limited lifetime warranty

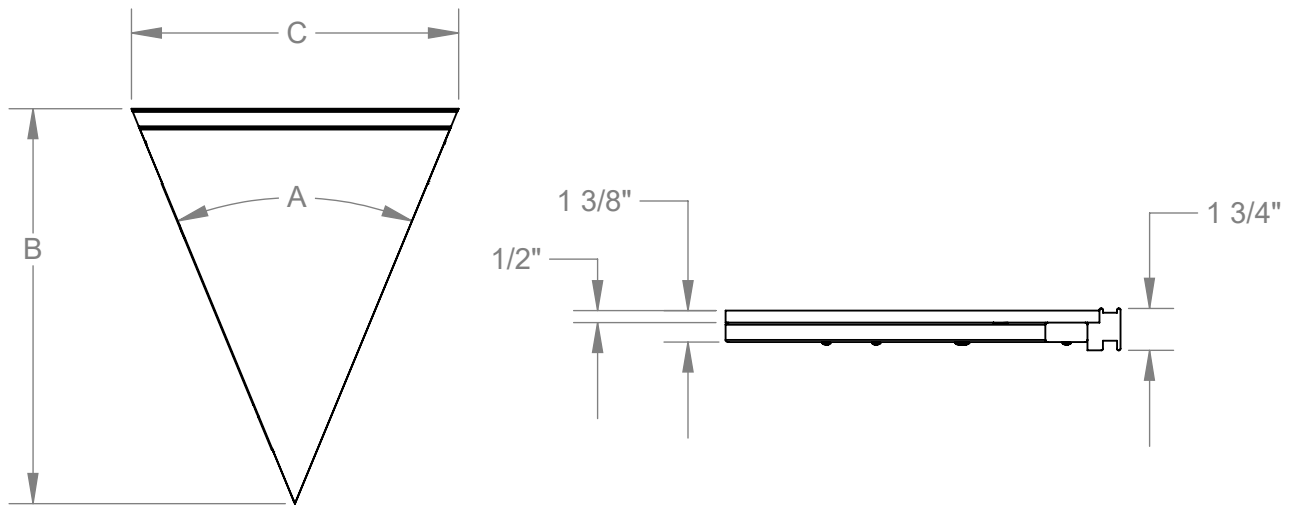
Notes:

- Indoor use only

Part Numbers	A	B
CTRL5048XXXX	50"	48"
CTRL5072XXXX	50"	72"
CTRL7248XXXX	72"	48"
CTRL7272XXXX	72"	72"

Control Space Division Shelf Kits / CTRLSHLF

Product Specifications



Materials:

- Frame: 7/8" Red oak
- Shelves: 1/2" Laminated plywood and 1/2" veneer plywood

Features:

- Available in 2 sizes
- Available in 4 frame colors: Natural, Urban Walnut, Java, and Modern Cherry
- Available in 3 laminate colors: White, Black, and Gray. Available in 4 veneer stain colors: Natural, Urban Walnut, Java, and Modern Cherry
- Sold in kits for 72" and 50" tall Control units
- Shelf carries a limited lifetime warranty

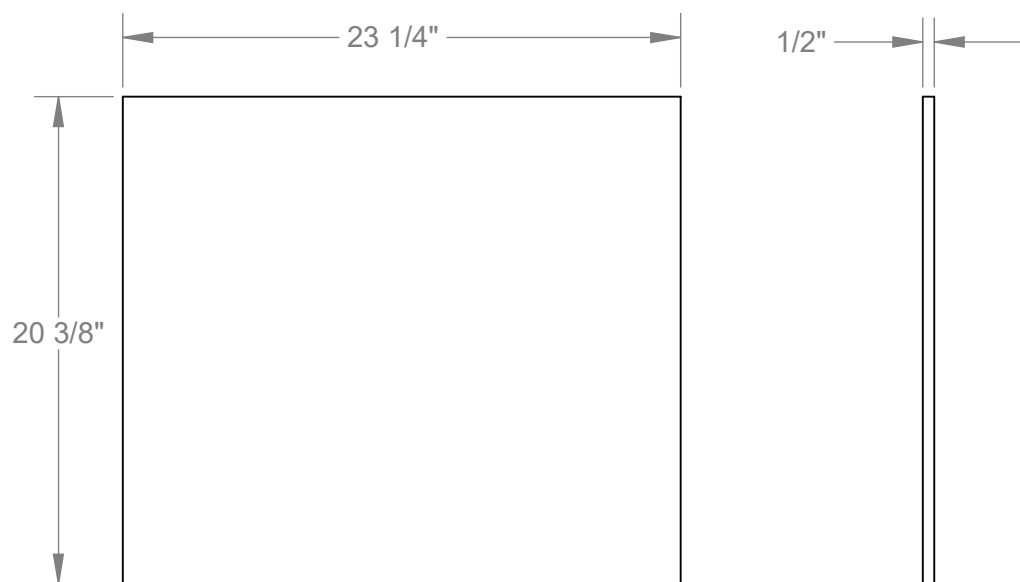
Notes:

- Indoor use only

Part Numbers	A	B	C
CTRLSHLF45	45°	16-1/2"	13-5/8"
CTRLSHLF90	90°	12-5/8"	25-1/4"

Control Space Division Panel Kits/ CTRLPNL

Product Specifications



Materials:

- Panel: 100% Polyester

Features:

- Available in 7 colors: Navy, Ash, Yellow, Blush, Silver, Lime, and Orange
- Sold in kits of two and four units.
- Can be used with all Control Space Division products
- Has a 0.45-0.9 NRC rating
- Panel carries a 90 day warranty

Notes:

- Indoor use only